

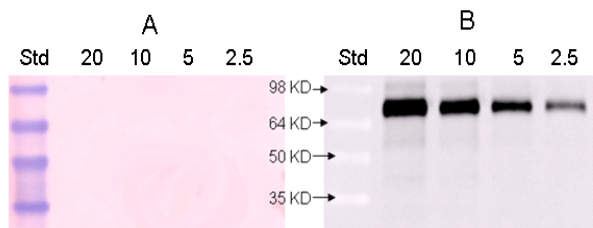
Product Specification

Catalog No:	CML30A-G1a, 0.5 mg
Host Species:	Goat
Antibody Concentration:	1mg / ml (OD. 1.35/280 nm).
Product Form:	Polyclonal antibody against CML-KLH purified by CML-Portein Sepharose™ affinity column.
Preservation:	In 75 mM PBS, 75 mM NaCl, 0.5 mM EDTA, 0.02% NaN ₃ , pH 7.2.
Specificity:	Specifically binds to CML modified proteins. Dilution for immunoblot and ELISA range: 200 to 20,000. (A slight amount of precipitation may have occurred during storage due to the natural properties of these antibodies; please centrifuge before use.).
Use:	The antibody can be used for detection of CML in plasma, lipoproteins, and other proteins, immunoassays, immunoblots, enzyme conjugation, or biotinylation.
Storage:	-20° C for long-term storage, 2-8° C for short-term storage. Aliquot to avoid repeated thaw and freeze.

™Sepharose is a trademark of Amersham Biosciences Limited.

**The products are for research or manufacturing use only, not for use in human therapeutic or diagnostic applications.*

Western Blot Data for Affinity Purified Goat Anti-CML Antibody



Carboxymethyl-lysine Modified Bovine Serum Albumin (ng/lane)

A. After transfer visualized with Ponceus (Sigma).

B. Western Blot

10% gel

1st : Goat anti-CML (1:1000)

2nd : HRP Donkey anti-Goat IgG (1:5000)