

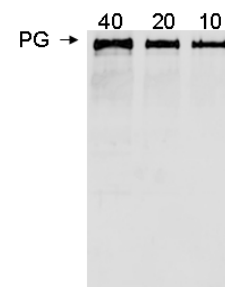
Product Specification

Catalog No:	PG60A-G1b, 1mg
Host Species:	Goat
Antibody Concentration:	1 mg / ml (OD 1.35 / 280 nm).
Source:	Polyclonal antibody purified by human plasminogen-Sepharose™ affinity column. *
Preservation:	In 10 mM PBS, 0.15 M NaCl, 0.02% NaN ₃ , 0.5 mM EDTA, pH 7.2.
Specificity: immunoblot	Specifically binds to human plasminogen. Dilution for and ELISA range: 200 to 40,000.
Use:	The antibody can be used for detection of plasminogen in plasma and lipoproteins, immunoassays, immunoblots, enzyme conjugation, or biotinylation.
Storage:	-20° C for long-term storage, 2-8° C for short-term storage. Aliquot to avoid repeated freezing and thawing.

™Sepharose is a trademark of Amersham Biosciences Limited.

**The products are for research or manufacturing use only, not for use in human therapeutic or diagnostic applications.*

Western Blot Data for Affinity Purified Goat Anti-Human Plasminogen Antibody



1. Human Plasminogen (ng/lane)
2. Goat anti-Human plasminogen (1:1000)
3. HRP Donkey anti-Goat IgG (1:5000)
4. 4-20% gel (Invitrogen Co.)