

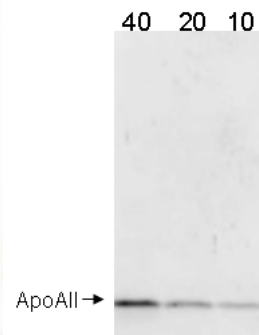
Product Specification

Catalog No:	12A-R1a, 0.5 mg
Host Species:	Rabbit
Antibody Concentration:	1 mg / ml (OD 1.35 / 280 nm).
Source:	Polyclonal antibody purified by human apo All-Sepharose™ affinity column. *
Preservative:	75mM PBS, 75 mM NaCl, 0.02% NaN ₃ , 0.5 mM EDTA, pH 7.2.
Specificity:	Specifically binds to human apo All. Dilution for immunoblot and ELISA range: 200 to 20,000.
Use:	The antibody can be used for detection of human apo All in plasma and lipoproteins, immunoassays, immunoblots, enzyme conjugation, or biotinylation.
Storage:	-20° C for long-term storage, 2-8° C for short-term storage. Aliquot to avoid Repeated freezing and thawing.

™Sepharose is a trademark of Amersham Biosciences Limited.

**The products are for research or manufacturing use only, not for use in human therapeutic or diagnostic applications.*

Western Blot Data for Affinity Purified Rabbit Anti-Human ApoAll Antibody



1. Human ApoAll (ng/lane)
2. Rabbit anti-Human ApoAll (1:1000)
3. HRP Goat anti-Rabbit IgG(1:5000)
4. 18% gel (Invitrogen Co.)