

Goat Anti-Human Albumin, Polyclonal Antibody; Affinity Purified

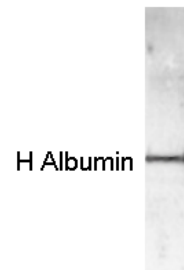
Product Specification

Catalog No:	AL10A-G1, 5 mg
Host Species:	Goat
Antibody Concentration:	1 mg / ml (OD 1.35 / 280 nm).
Source:	Goat anti human albumin polyclonal antibody purified by human albumin-Sepharose™ affinity column. *
Buffer:	75 mM PBS, 75 mM NaCl, 0.02% NaN ₃ , 0.5 mM EDTA, pH 7.2.
Specificity:	Specifically binds to human albumin. Dilution for immunoblot and ELISA range: 200 to 80,000.
Use:	The antibody can be used for detection of human albumin in plasma and lipoproteins, immunoassays, immunoblots, enzyme conjugation, or biotinylation.
Storage:	-20° C for long-term storage, 2-8° C for short-term storage. Aliquot to avoid repeated freezing and thawing.

™Sepharose is a trademark of Amersham Biosciences Limited.

**The products are for research or manufacturing use only, not for use in human therapeutic or diagnostic applications.*

Western Blot Data for
Affinity Purified Goat Anti-Human
Albumin Antibody



Human Albumin (1.25 ng/lane)
4-20% gel
1st : Goat anti-Human Albumin
(1:1000)
2nd : HRP Donkey anti-Goat IgG
(1:5000)